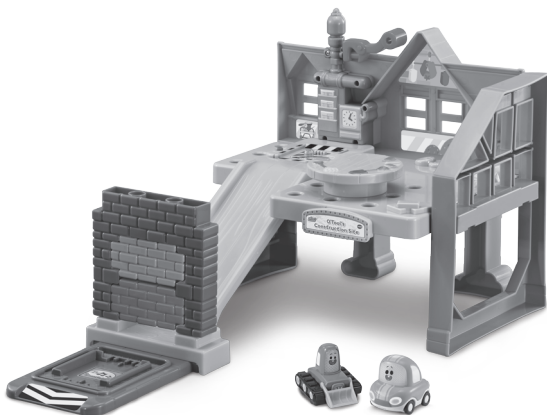


vtech®

Parent's Guide

TOOT-TOOT
CORY
CARSON®

O'Tool's Construction Site



91-003866-001 UK

VTech understands that a child's needs and abilities change as they grow and with that in mind we develop our toys to teach and entertain at just the right level...

vtech *Baby*

Toys that will stimulate their interest in different textures, sounds and colours

I am...

...responding to colours, sounds and textures

...understanding cause and effect

...learning to touch, reach, grasp, sit-up, crawl and toddle

Birth-36 months



Pre-School

Interactive toys to develop their imagination and encourage language development

I want...

...to get ready for school by starting to learn the alphabet and counting

...my learning to be as fun, easy and exciting as can be

...to show my creativity with drawing and music so my whole brain develops

3-6 years



Electronic Learning Computers

Cool, aspirational and inspiring computers for curriculum related learning

I need...

...challenging activities that can keep pace with my growing mind

...intelligent technology that adapts to my level of learning

...National Curriculum based content to support what I'm learning at school

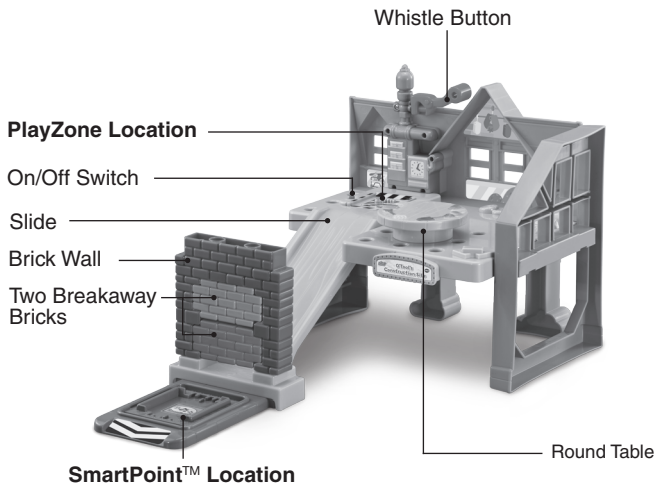
4-10 years



To learn more about this and other VTech® products, visit www.vtech.co.uk

INTRODUCTION

Thank you for purchasing the **VTech® Toot-Toot Cory Carson® O'Tool's Construction Site!** Explore everything the O'Tool's construction site home has to offer with mini characters Cory Carson and Timmy O'Tool in this 360° play set. Knock down walls, sound the whistle and slide down the ramp for exciting role-play.



INCLUDED IN THIS PACKAGE

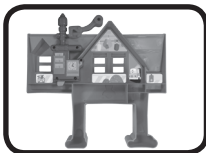
NOTE: This toy is not intended for teething.



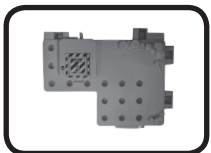
One mini Cory



One mini Timmy



One house front



One **PlayZone** base



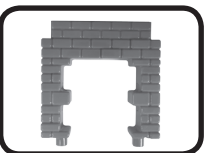
One left support



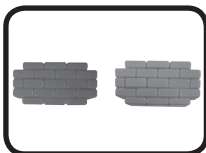
One right support



One slide



One brick wall



Two breakaway
bricks



One **SmartPoint™**
base



One round table



One label sheet

- One Parent's Guide

WARNING:

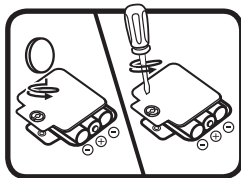
All packing materials such as tape, plastic sheets, packaging locks, removable tags, cable ties, cords and packaging screws are not part of this toy and should be discarded for your child's safety.

NOTE : Please keep this Parent's Guide as it contains important information.

GETTING STARTED

BATTERY REMOVAL AND INSTALLATION

1. Make sure the unit is turned **OFF**.
2. Locate the battery cover on the bottom of the **Construction Site**. Then, use a coin or a screwdriver to loosen the screw and remove the cover.
3. Remove old batteries by pulling up on one end of each battery.
4. Install 3 new AAA (AM-4/LR03) batteries following the diagram inside the battery box. (The use of new alkaline batteries is recommended for maximum performance).
5. Replace the battery cover and tighten the screw to secure.



BATTERY NOTICE

- Use new alkaline batteries or fully charged NI-MH (Nickel Metal-hydride) rechargeable batteries for best performance.
- Use only batteries of the same or equivalent type as recommended.
- Do not mix different types of batteries: alkaline, standard (carbon-zinc) or rechargeable, or new and used batteries.
- Do not use damaged batteries.
- Insert batteries with the correct polarity.
- Do not short-circuit the battery terminals.
- Remove exhausted batteries from the toy.
- Remove batteries during long periods of non-use.
- Do not dispose of batteries in fire.
- Do not charge non-rechargeable batteries.
- Remove rechargeable batteries from the toy before charging (if removable).
- Rechargeable batteries are only to be charged under adult supervision.

Disposal of batteries and product



The crossed-out wheellie bin symbols on products and batteries, or on their respective packaging, indicates they must not be disposed of in domestic waste as they contain substances that can be damaging to the environment and human health.



The chemical symbols Hg, Cd or Pb, where marked, indicate that the battery contains more than the specified value of mercury (Hg), cadmium (Cd) or lead (Pb) set out in Battery Directive (2006/66/EC).

The solid bar indicates that the product was placed on the market after 13th August, 2005.

Help protect the environment by disposing of your product or batteries responsibly.

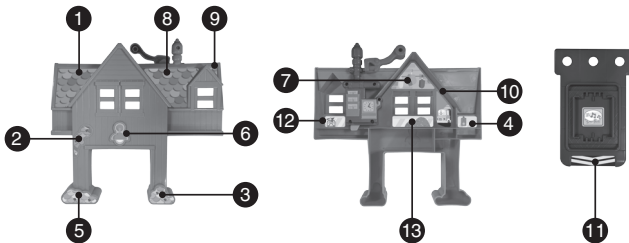
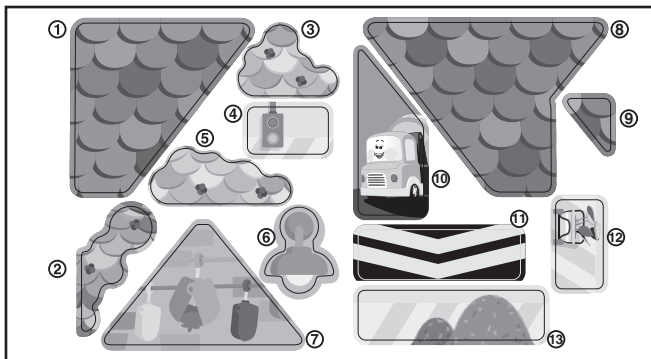
For more information, please visit:

www.recycle-more.co.uk

www.recyclenow.com

LABEL APPLICATION

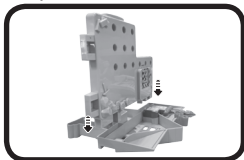
Please apply the labels to the play set as shown below:



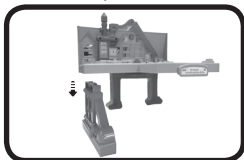
ASSEMBLY INSTRUCTIONS

With the **O'Tool Construction Site**, safety comes first. To ensure your child's safety, adult assembly is required.

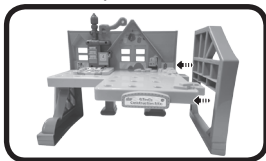
1. Lay the **House Front** face down on a flat surface. Insert the **PlayZone Base** tabs into the slots on the **House Front**. Press until you hear a “click” to indicate it is secure. Once connected, the parts cannot be taken apart.



2. Attach the **Left Support** to the **PlayZone Base**. Press until you hear a “click.” Once the parts are connected they cannot be taken apart.



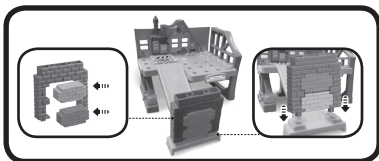
3. Insert the **Right Support** into the **PlayZone Base**. Press until you hear a “click.” Once the parts are connected they cannot be taken apart.



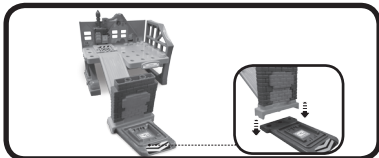
4. Attach the **Slide** to the **PlayZone Base**.



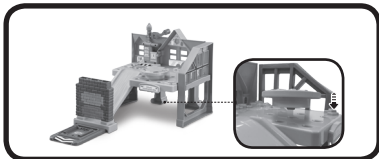
5. Insert the **Breakaway Bricks** into the **Brick Wall** and insert the **Brick Wall** into the base of the **Slide**.



6. Attach the **SmartPoint™ Base** to the end of the **Slide**.



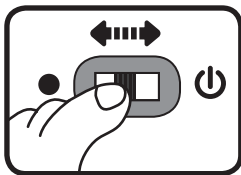
7. Insert the **Round Table** onto the **PlayZone Base**.



PRODUCT FEATURES

1. On/Off Switch

To turn the **O'Tool's Construction Site ON**, slide the **On/Off Switch** to the **ON** ☺ position. To turn the **O'Tool's Construction Site OFF**, slide the **On/Off Switch** to the **OFF** ● position.



2. Automatic Shut-Off

To preserve battery life, the **O'Tool's Construction Site** will automatically power down after approximately 60 seconds without input. The unit can be turned on again by pressing the **Whistle Button** or by triggering the **PlayZone Location** with a mini character.

NOTE:

If the unit powers down while playing, please install a new set of batteries.

ACTIVITIES

1. PlayZone Location

Place **Mini Cory**, **Mini Timmy** or other **Toot-Toot Cory Carson®** mini characters (sold separately) on the **PlayZone Location** to trigger sounds, short tunes and phrases. The light will flash with the sounds.



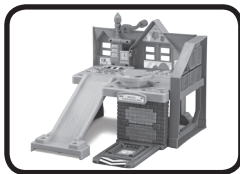
2. Whistle Button

Place a mini vehicle on the **PlayZone** and press the **Whistle Button** to launch the mini vehicle down the slide and knock down the wall. When no mini vehicle is on the **PlayZone**, press the **Whistle Button** to hear songs, melodies and phrases.



3. 360° of Play

Mix and match the **Slide**, **SmartPoint™ Base**, **Round Table** and **Brick Wall** for multiple configurations or connect to other **Toot-Toot Cory Carson®** play sets (each sold separately).



4. SmartPoint™ Location

Place a **SmartPoint™** character (sold separately) on the **SmartPoint™ Base** to hear fun phrases and sound effects.



CARE & MAINTENANCE

1. Keep the unit clean by wiping it with a slightly damp cloth.
2. Keep the unit out of direct sunlight and away from any direct heat sources.
3. Remove the batteries when the unit is not in use for an extended period of time.
4. Do not drop the unit on a hard surface and do not expose the unit to excess moisture.

TROUBLESHOOTING

If for some reason the unit stops working or malfunctions, please follow these steps:

1. Please turn the unit **OFF**.
2. Interrupt the power supply by removing the batteries.
3. Let the unit sit for a few minutes, then replace the batteries.
4. Turn the unit **ON**. The unit should now be ready to play again.
5. If the product still does not work, replace with a new set of batteries.

If the problem persists, please call our Consumer Services Department and a service representative will be happy to help you.

CONSUMER SERVICES

Creating and developing **VTech®** products is accompanied by a responsibility that we at **VTech®** take very seriously. We make every effort to ensure the accuracy of the information, which forms the value of our products. However, errors sometimes can occur. It is important for you to know that we stand behind our products and encourage you to call our Consumer Services Department with any problems and/or suggestions that you might have. A service representative will be happy to help you.

UK Customers:

Phone: 0330 678 0149 (from UK) or +44 330 678 0149 (outside UK)

Website: www.vtech.co.uk/support

Australian Customers:

Phone: 1800 862 155

Website: support.vtech.com.au

NZ Customers:

Phone: 0800 400 785

Website: support.vtech.com.au

PRODUCT WARRANTY/ CONSUMER GUARANTEES

UK Customers:

Read our complete warranty policy online at vtech.co.uk/warranty.

Australian Customers:

VTECH ELECTRONICS (AUSTRALIA) PTY LIMITED –
CONSUMER GUARANTEES

Under the Australian Consumer Law, a number of consumer guarantees apply to goods and services supplied by VTech Electronics (Australia) Pty Limited. Please refer to vtech.com.au/consumerguarantees for further information.



CLASS 1
LED PRODUCT



**Visit our website for more
information about our products,
downloads, resources and more.**

www.vtech.co.uk
www.vtech.com.au



TM & © 2020 VTech Holdings Limited.
All rights reserved.
Printed in China.
91-003866-001 